

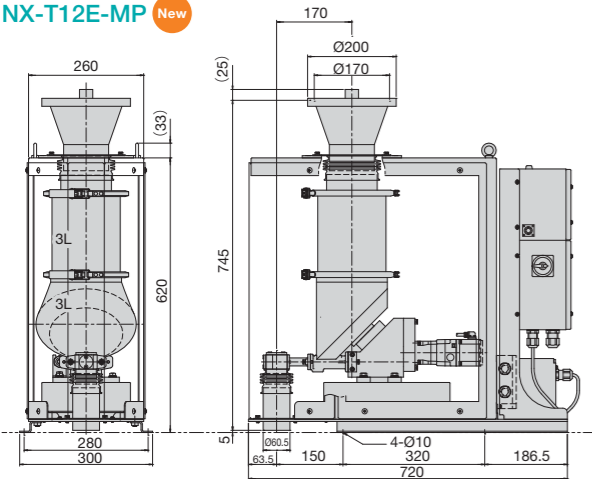
## Main specifications

Feeder	Twin screw feeder		Single screw feeder		Twin screw feeder	
Model	NX-T12E-MP	NX-S50E-MP	NX-S78E-MP	NX-T26E-MP	NX-T45ME-MP	
Flow rate range	10ml~10L/h	2~300L/h	30~2000L/h	1~300L/h	10~2000L/h	
Hopper capacity	6L	50L	100L	50L	100L	
Weight capacity	3kg	40kg	100kg	40kg	100kg	
Minimum graduation	0.01g	0.5g	1g	0.5g	1g	
Drive unit	Sensorless servo motor					
Weighing unit	Digital load cell					
Materials	Parts in contact with bulk materials are SUS304, Others are general industrial materials					
Control module	KF-CM + KF-D-20	KF-CM + KF-D-70	KF-CM + KF-D-150	KF-CM + KF-D-70	KF-CM + KF-D-150	
Weight	Approx. 50kg	Approx. 90kg	Approx. 151kg	Approx. 92kg	Approx. 157kg	
Power supply	AC200-240V ±10%, single phase (50Hz/60Hz)					
Power capacity	0.5kVA	1.3kVA	3.1kVA	1.3kVA	3.1kVA	

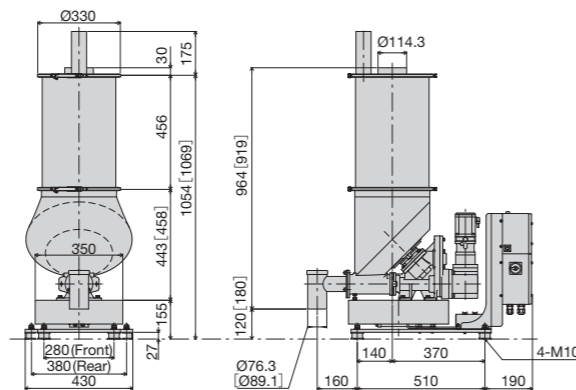
※Self-standing panel type and hopper capacity 200 L type are also available. Please feel free to contact us. ※Please contact us for explosion-proof type.

## Outline drawings

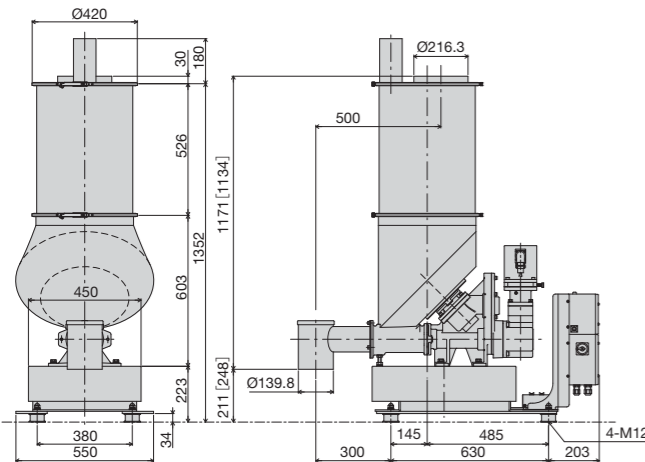
NX-T12E-MP **New**



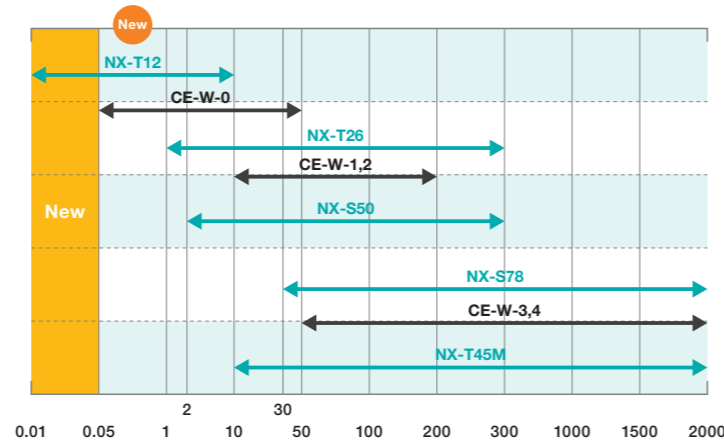
NX-S50E-MP [NX-T26E-MP]



NX-S78E-MP [NX-T45ME-MP]



Flow rate range (L/h)



## KUBOTA Corporation Precision Equipment Dept.

2-35, Jinmu-cho, Yao-city, Osaka 581-8686, Japan  
 Phone: (81)72-993-1897  
 F A X: (81)72-993-2829  
 URL: <http://www.kubota-feeders.com/>



No.0329 2020.9-3000 AEM.0GW

## Gravimetric Feeder

(Constant Flow Feeder)

KUBOTA NX Series

For Earth, For Life



New

10 Micro Flow  
ml/h



2000  
Large Flow L/h



# Highly accurate and stable gravimetric control, even at a micro flow rate

Micro class

**10** ml/h **New**

We have realized a highly accurate and stable feeding of micro flow rate by the "loss-in-weight type".

As a result, it is now possible to feed micro additives individually not only in the lab line but also in the production line without the premixing process.



# Feeding various raw materials with a wide range of flow rates with one model

Up to

**2000** L/h

We have a lineup of one model that can be applied to a wide range of raw materials and flow rates, from low flow rate additives to high flow rate main raw materials.

Single screw Model : NX-S



Twin screw Model : NX-T



Two types are available: a single screw type that is best suited for feeding main raw materials and a twin screw type that is optimal for highly accurate feed of powders such as sub materials and additives. Especially in the small flow rate range, the twin screw type can realize more accurate feed compared to the single screw type.

## Innovative design for high accuracy

### Wide Material Application

Newly developed negative wall angle hopper and diagonal agitator prevent bridges and rat holes in the hopper. Not only powder, but also a wide range of raw materials such as pellets, fibers and crushed sheets can be fed without problems.

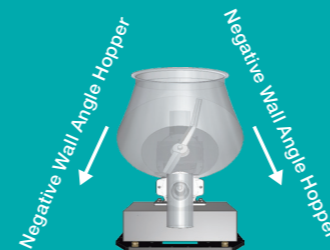
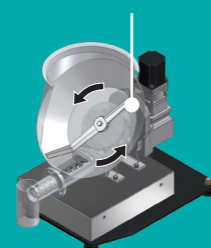
### High Feeding Accuracy

The agitator rotating along the bottom of the hopper wall decreases unnecessary movement of materials and passes directly above the screw while pushing the raw material. These features achieve high feeding accuracy because the material is filled stably into the screw part.

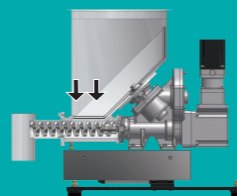
### Easy Maintenance

Because of its simple structure and small number of components adopting the bolt fall prevention structure, disassembly and cleaning maintenance is easy. Also, since a grease lubricant that can be used for a long time is adopted for the gearbox, the time for replacement and replenishment is reduced.

Diagonal Agitator



High filling rate into screw part



Check here for the unique and innovative movements of the NX feeder!

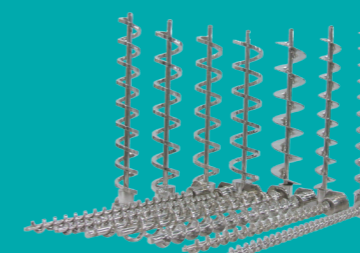


Possible to handle various raw materials and flow rates simply by exchanging the screws and discharge tubes of the standard lineup.

Because Kubota has about 40 years of material handling experience, it can handle a wide variety of raw materials and flow rates without customizing. We have various types and sizes of screws and tubes as a standard lineup, and we propose combinations that meet the needs of our customers.

### Material application examples

Pellet, resin powder, filler, calcium carbonate, talc, titanium dioxide, glass fiber, fluff, clashed film, clashed sheet, pigment, carbon black, additives, etc.



※Example of screw line-up

## Market share in Japan

**No.1**\*

※According to in-house research based on JMIF production statistics as of Aug.2020

## In-house manufacturing of load cell, which is a core component

Kubota also develops and consistently manufactures digital load cells in-house, and its annual production exceeds 30,000 units.

